



Actual Shot.



MAKE YOUR SMARTEST MOVE WITH SMARTER POSSIBILITIES

Premium retail & office opportunity within a 135-acre smart township

RERA Regn. No.: PRM/KA/RERA/1250/303/PR/180627/001942 • Details available at www.rera.karnataka.gov.in



THE ARCADE AT BRIGADE ORCHARDS NEAR AEROSPACE PARK, DEVANAHALLI

BrigadeGroup.com

THE ARCADE ADVANTAGE

The Arcade opens up a whole new world of opportunity. With provision for retail area in the ground & 1st floors, office spaces in the 2nd to 5th floors, road facing shops, a beautifully planned atrium & corridors, natural light & ventilation and ample parking, the possibilities are endless. Designed to be a multifaceted destination, The Arcade will cater to over 5,000 families of Brigade Orchards and the neighbouring catchment area.

KEY DESIGN FEATURES

- Open Atrium • Terrace Garden • Structure: B+G+5 floors
- Designed as per NBC and KFF / BIAPPA norms • Ample Parking

RETAIL SPACE IDEAL FOR

Supermarket / Convenience Stores for daily needs • Salons, Fashion & Beauty Stores
Pharmacy & Stationery Outlets • Florists, Gift & Music Stores
Fine Dining Restaurants, Eateries & Coffee Shops • Apparel & Footwear Stores
Electronic Sales & Service Centres • Fitness Centres • Crèche • Banks & ATMs

OFFICE SPACE IDEAL FOR

Travel Agents & Courier Offices • Cyber Cafes / Telecom Hubs • Health Clinics
Polyclinics • Architects • Law Firms • CA, Accounting & Tax / Audit Offices
Startups • Corporate Offices / Headquarters

MASTER PLAN



Devanahalli is poised to become Bangalore's first sister city, as an independent growing community that will be socially and economically inter dependent on each other for mutual growth and development.

Brigade Orchards is easily accessible from the city and is comfortably situated with vibrant social infrastructure in the form of numerous upcoming entertainment hotspots, hotels, shopping malls, a school, healthcare facilities, a sports arena, indoor games and workout facilities at the Signature Club Resort which is sure to emerge as the newest development hub while Retail & Office spaces at The Arcade take care of your everyday needs.



*Proposed.

The information depicted herein viz., master plans, floor plans, furniture layout, fittings, illustrations, specifications, designs, dimensions, rendered views, colours, amenities and facilities etc., are subject to change without notifications as may be required by the relevant authorities or the developer's architect, and cannot form part of an offer or contract. Whilst every care is taken in providing this information, the Developer cannot be held liable for variations. All illustrations and pictures are artist's impression only. The information are subject to variations, additions, deletions, substitutions and modifications as may be recommended by the company's architect and/or the relevant approving authorities. The Developer is wholly exempt from any liability on account of any claim in this regard. (1 square metre = 10.764 square feet). E & OE. All dimensions and calculations are done in metric system (M/Sq.m), and imperial system (Ft/Sq.ft) shown is for reference only. All dimensions indicated in the drawing are from unfinished surfaces, excluding plaster thickness and tile thickness.

- DISTANCES TO KEY SPOTS:
- Bangalore International Airport: 20 Minutes
 - Nandi Hills: 45 Minutes
 - Jain Temple: 5 Minutes
 - Devanahalli Fort: 8 Minutes
 - Trumpet Flyover: 13 Minutes
 - Hebbal Flyover: 30 Minutes
 - Devanahalli Police Station: 5 Minutes

STRATEGIC LOCATION

Strategically located, in the heart of Devanahalli and just 10 minutes from Kempegowda International Airport, The Arcade is situated towards the North Entrance of the 135-acre haven, Brigade Orchards. A six-lane highway from Hebbal to Devanahalli links the airport to the city, which makes commute from Brigade Orchards to Hebbal or Whitefield a smooth one.

THE LUXURY OF CONVENIENCE

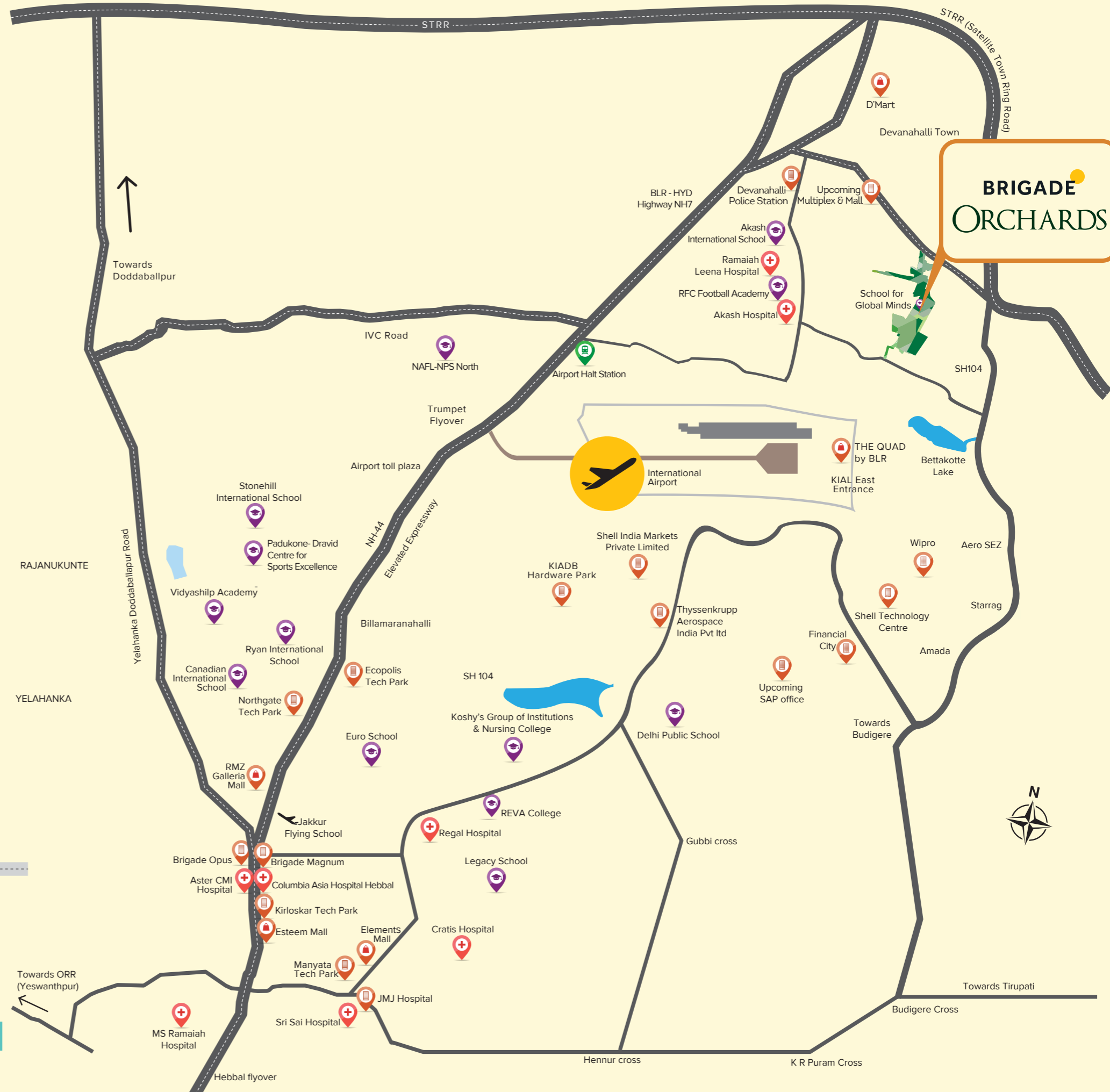
BRIGADE ORCHARDS Devanahalli

- Kempegowda International Airport: 10 mins drive
- Yelahanka Railway Station: 25 mins drive
- Manyata Tech Park: 30 mins drive
- Decathlon: 20 mins drive
- Esteem Mall: 25 mins drive

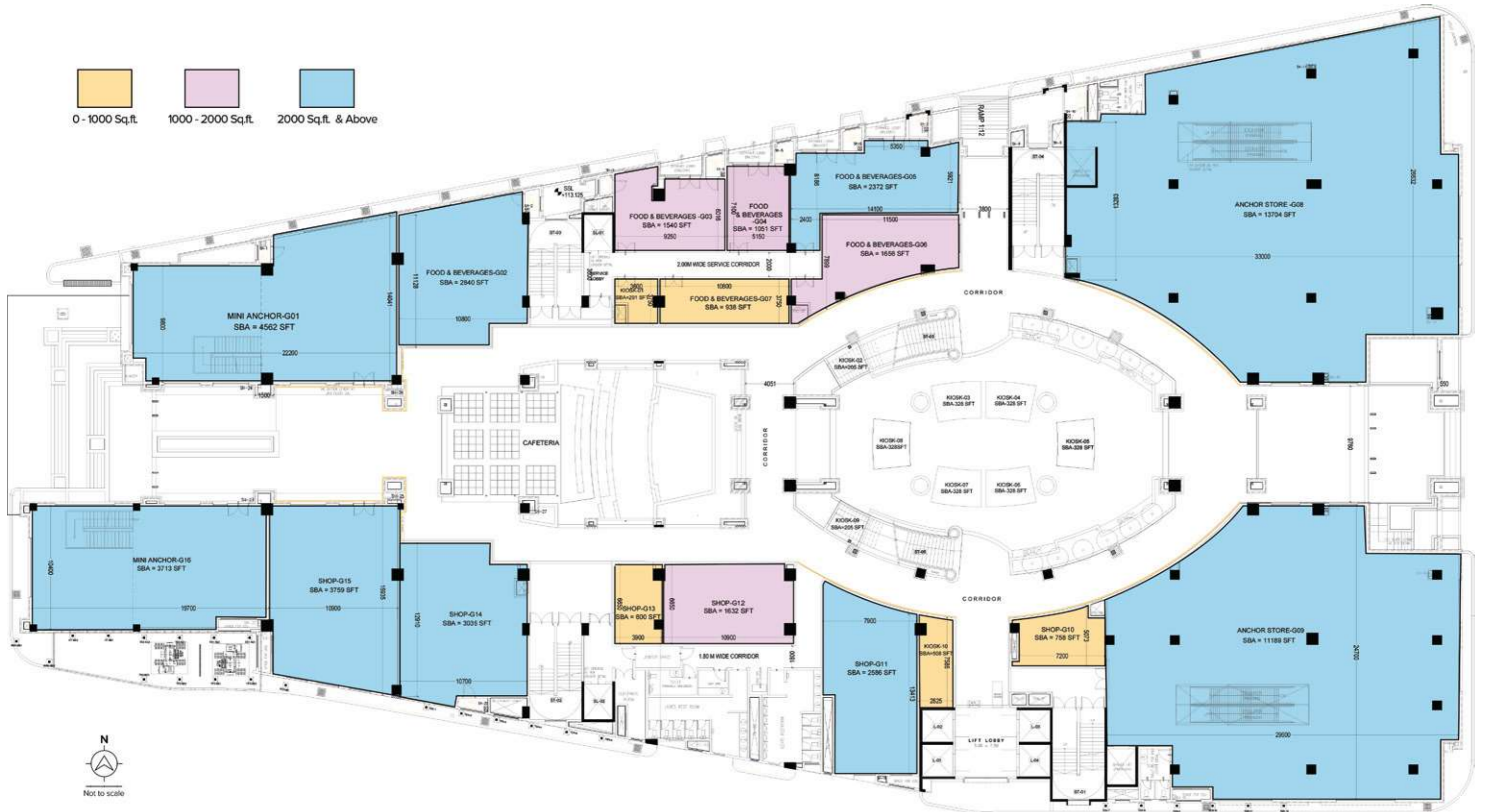
Banks
South Indian Bank • Lakshmi Vilas Bank • ICICI Bank

Supermarket
DMart Supermarket

Hospitals
Columbia Asia • Ramaiah • Leena • Akash • Manasa • Drishti Eye Care Centre

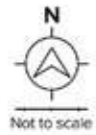


GROUND FLOOR PLAN (RETAIL SPACE)



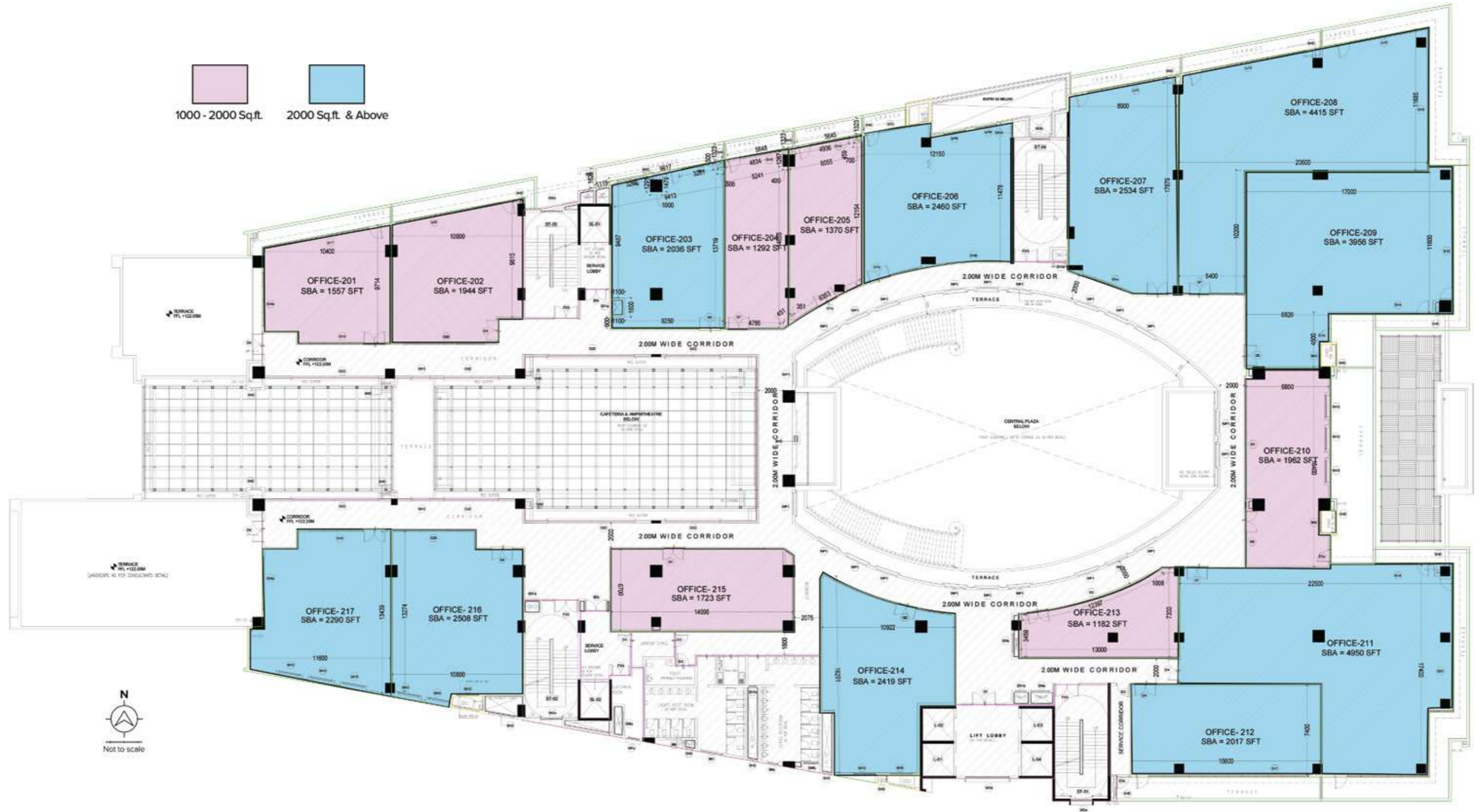
The information depicted herein viz., master plans, floor plans, furniture layout, fittings, illustrations, specifications, designs, dimensions, rendered views, colours, amenities and facilities etc., are subject to change without notifications as may be required by the relevant authorities or the developer's architect, and cannot form part of an offer or contract. Whilst every care is taken in providing this information, the Developer cannot be held liable for variations. All illustrations and pictures are artist's impression only. The information are subject to variations, additions, deletions, substitutions and modifications as may be recommended by the company's architect and/or the relevant approving authorities. The Developer is wholly exempt from any liability on account of any claim in this regard. (1 square metre = 10.764 square feet). E & OE. All dimensions and calculations are done in metric system (M/Sq.m), and imperial system (Ft/Sq.ft) shown is for reference only. All dimensions indicated in the drawing are from unfinished surfaces, excluding plaster thickness and tile thickness.

FIRST FLOOR PLAN (RETAIL SPACE)



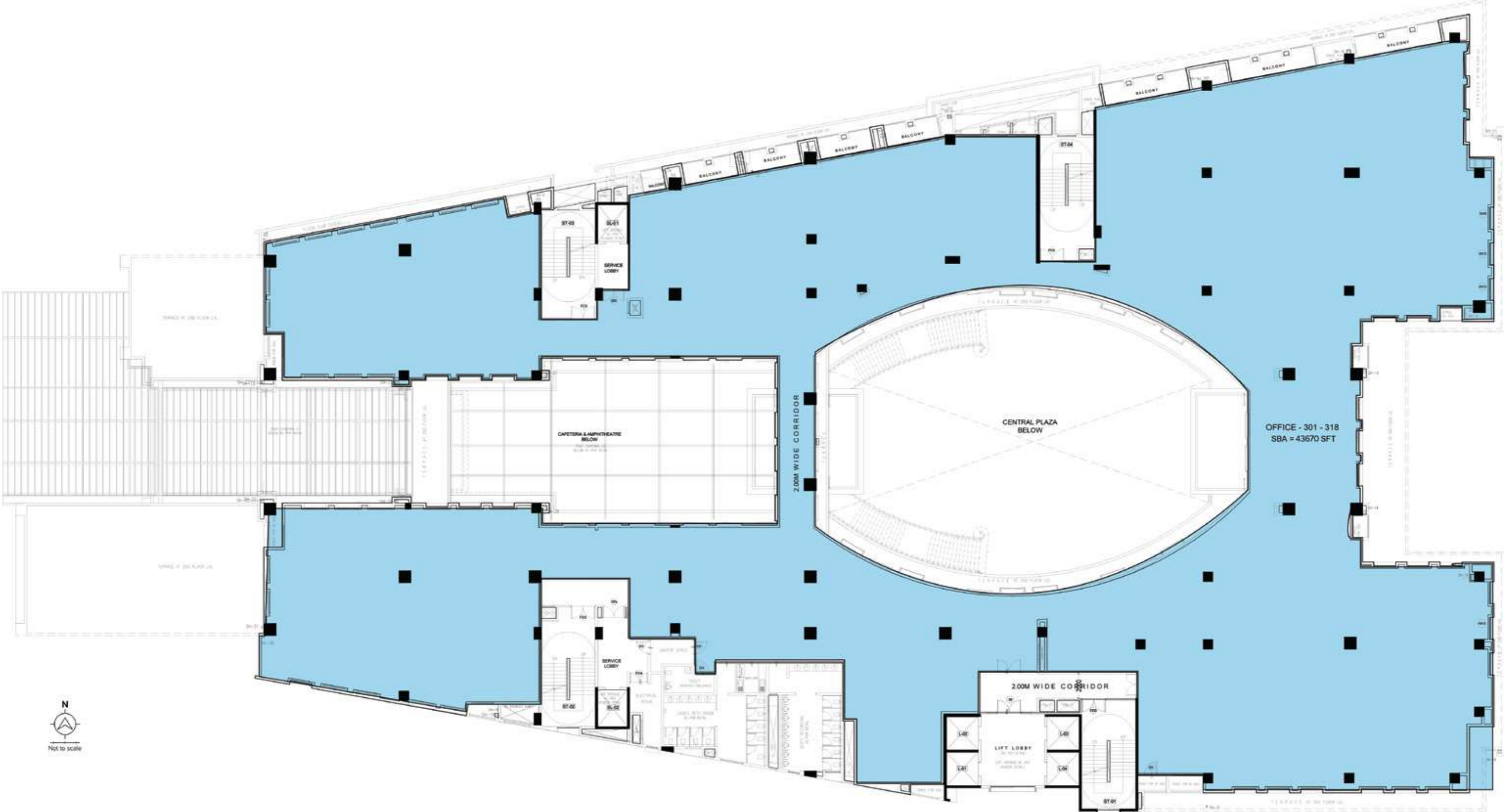
The information depicted herein viz., master plans, floor plans, furniture layout, fittings, illustrations, specifications, designs, dimensions, rendered views, colours, amenities and facilities etc., are subject to change without notifications as may be required by the relevant authorities or the developer's architect, and cannot form part of an offer or contract. Whilst every care is taken in providing this information, the Developer cannot be held liable for variations. All illustrations and pictures are artist's impression only. The information are subject to variations, additions, deletions, substitutions and modifications as may be recommended by the company's architect and/or the relevant approving authorities. The Developer is wholly exempt from any liability on account of any claim in this regard. (1 square metre = 10.764 square feet). E & OE. All dimensions and calculations are done in metric system (M/Sq.m), and imperial system (Ft/Sq.ft) shown is for reference only. All dimensions indicated in the drawing are from unfinished surfaces, excluding plaster thickness and tile thickness.

SECOND FLOOR PLAN (OFFICE SPACE)



The information depicted herein viz., master plans, floor plans, furniture layout, fittings, illustrations, specifications, designs, dimensions, rendered views, colours, amenities and facilities etc., are subject to change without notifications as may be required by the relevant authorities or the developer's architect, and cannot form part of an offer or contract. Whilst every care is taken in providing this information, the Developer cannot be held liable for variations. All illustrations and pictures are artist's impression only. The information are subject to variations, additions, deletions, substitutions and modifications as may be recommended by the company's architect and/or the relevant approving authorities. The Developer is wholly exempt from any liability on account of any claim in this regard. (1 square metre = 10.764 square feet). E & OE. All dimensions and calculations are done in metric system (M/Sq.m), and imperial system (Ft/Sq.ft) shown is for reference only. All dimensions indicated in the drawing are from unfinished surfaces, excluding plaster thickness and tile thickness.

THIRD FLOOR PLAN (OFFICE SPACE)



The information depicted herein viz., master plans, floor plans, furniture layout, fittings, illustrations, specifications, designs, dimensions, rendered views, colours, amenities and facilities etc., are subject to change without notifications as may be required by the relevant authorities or the developer's architect, and cannot form part of an offer or contract. Whilst every care is taken in providing this information, the Developer cannot be held liable for variations. All illustrations and pictures are artist's impression only. The information are subject to variations, additions, deletions, substitutions and modifications as may be recommended by the company's architect and/or the relevant approving authorities. The Developer is wholly exempt from any liability on account of any claim in this regard. (1 square metre = 10.764 square feet). E & OE. All dimensions and calculations are done in metric system (M/Sq.m), and imperial system (Ft/Sq.ft) shown is for reference only. All dimensions indicated in the drawing are from unfinished surfaces, excluding plaster thickness and tile thickness.

MULTIPLE DOMAINS, SINGLE-MINDED COMMITMENT.

**Apartments
Villas
Integrated Enclaves
Senior Living**



The Brigade Group is one of India's leading property developers with over three decades of expertise in building positive experiences for all stakeholders. Instituted in 1986, the company has developed many landmark buildings and transformed the skyline of cities across South India, namely – Bengaluru, Mysuru, Mangaluru, Chikmagalur, Hyderabad, Chennai, Kochi, and GIFT City, Gandhinagar with developments across the Residential, Commercial, Retail, Hospitality and Education sectors. Since its inception, Brigade has completed 250+ buildings amounting to over 76 million sq. ft of developed space across a diverse real estate portfolio.

Brigade assures best-in-class design and top-of-the-line facilities that exude elegance and sophistication. The Residential developments include villas, villaments, penthouses, premium residences, luxury apartments, plots, value homes, urban studios, independent living for seniors and mixed-use lifestyle enclaves and townships. Over the years, the projects have been one-of-a-kind in the sector, for example Brigade developed Brigade Gateway, Bengaluru's first lifestyle enclave and Brigade Exotica, one of the tallest residential buildings in Bengaluru.

**Offices
Retail Spaces**



Brigade is among the few developers that also enjoys a reputation of developing Grade A Commercial properties. The license owners of the World Trade Center across South India, the Group's commercial spaces have top international clients operating out of them. Brigade also entered the co-working space with 'BuzzWorks' in March 2019. The commercial segment has seen consistent growth over the last few years with over 5 million sq. ft of office spaces under development.

Brigade Retail's first venture was the iconic, world-class Orion Mall at Brigade Gateway, subsequently expanding with Orion Avenue and Orion Uptown. Brigade's Hospitality offerings include star hotels, recreational clubs, convention centres and The Baking Company, a unique patisserie.

Brigade is the founder of The Indian Music Experience (IME) – a monumental and philanthropic initiative that is India's only hi-tech interactive music museum. It was conceived to give back to society and sensitise the present generation to the rich culture of Indian music. The Group contributes in numerous ways towards community development, health, education, and the environment. Through the Brigade Foundation, the brand has successfully opened three schools in its name, offering holistic education; has conducted large-scale tree plantation drives; spruced up parts of the city; revived public recreational spots like lakes and parks, to name a few.

**Clubs
Hotels
Convention Centres
Schools**



Brigade Real Estate Accelerator Program (REAP), Asia's first startup accelerator program, is a prelude to the changing trends in the real estate industry, which is standing on the cusp of disruption. REAP brings along innovators and inventors to use technology as a catalyst for creating sustainable and scalable businesses in the real estate industry.

'Great Place to Work Institute' has rated the Brigade Group as one of India's best companies to work for in the real estate industry. This responsible attitude and innovative mindset combined with uncompromising quality of the projects over the years has created a brand of outstanding repute.



Great Place to Work 2023

Brigade Group was recognized among India's top 100 mid-size companies to work for by the prestigious 'Great Place to Work' institute.

Brigade Group

Recognized as one of 'India's Top Builders - National Category' at the Construction World Architect and Builder Awards (CWAB) 2022

M R Jaishankar

was awarded the 'Bharat Ratna Sir M. Visvesvaraya Memorial Award 2022' for his contributions in the construction and building sector, as well as in the fields of education, health, community development, social and philanthropic work.

Brigade El Dorado - North Bengaluru

Received the prestigious 'Pradhan Mantri Awas Yojana' award under the Affordable Housing projects' at the PMAY - Empowering India Awards 2022

Brigade Orchards - North Bengaluru

Won the 'Residential Project - Township' at The Economic Times Real Estate Awards 2022 - South

The Economic Times Real Estate Awards 2022

Brigade Orchards won Residential Project – Township, Brigade Xanadu for Themed Based Project Brigade Atmosphere for best Villa Project

Brigade Cornerstone Utopia - East Bengaluru

Won the 'Integrated Township Project of the Year' award at the 11th Realty Plus Awards 2019 - South

Brigade Panorama - West Bengaluru

Won the award for 'Excellence in Delivery' at the 11th Realty Plus Awards 2019 - South

Brigade Mountain View - Mysuru

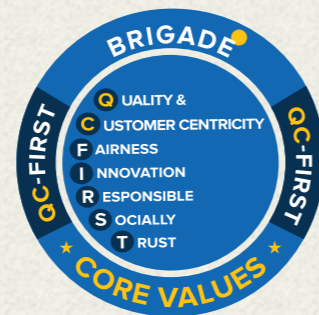
Won the award for 'Best Residential Dwellings above 50 units in Mysuru' at the CARE Awards 2019



BRIGADE

Building Positive Experiences

Our Core Values



Founders



Awarded



To **UPGRADE TO BRIGADE**, call: **1800 102 9977** or email: salesenquiry@brigadegroup.com

Corporate Office: 29th & 30th Floor, World Trade Center, Brigade Gateway Campus, 26/1, Dr. Rajkumar Road, Malleswaram-Rajajinagar, Bengaluru 560 055.